

The beginnings of an
ALBUM
of
CORNISH DIPTERA



by
Bernard Hocking

PREFACE

This is the humble beginnings of an album of Cornish Diptera.

One thing can be said at the outset for certain and that is that it will never be finished.

Unfortunately owing to the difficulty in making a positive identification of most species it is necessary to catch them, so some photographs are only of dead specimens.

Where and when possible I hope to add better images in due course.

Scale, is another problem, to overcome this I have added the average wing length, as a guide, though with some species there is a large variation in size.

The dates quoted are extracted from the Erica database and give the extreme dates when the first and last were seen, more often seen in the middle of the range quoted.

Online version www.cornwallbiodiversitynetwork.org

BOOKS USED

Bibionid and Scatopsid Flies by P.Freeman and R.P.Lane

Britain's Hoverflies by Stuart Ball and Roger Morris

British Flies Vol VI by J.E.Collin

British Hoverflies by Alan E. Stubbs and Steven J. Falk

British Lonchaeidae by Iain MacGowan and Graham Rotheray

British Soldierflies and their Allies by Alan Stubbs and Martin Drake

Collins Guide to the INSECTS of Britain and Western Europe by Michael Chinery

Flies of the British Isles by Colyer & Hammond

INSECTS of Britain and Ireland by Paul D Brock

Moth Flies by Phil Withers

The European Families of the Diptera Identification by Pjotr Oosterbroek

Tachinid Flies by Robert Belshaw

The Natural History of Flies by Harold Oldroyd

Thanks too to all those that contribute so much information on the internet free to all who wish to use it.

Many thanks to Leon Truscott for allowing me to use his photos, where mine were poor quality or non-existent.

Last but not least, a really big thank-you to all the Cornish and other Wildlife Enthusiasts that have helped me with the identification of difficult species

Bernard Hocking

Dasysyrphus albostratus

Two grey stripes on thorax and
angled bars on abdomen

Recent Cornish records
29 April - 26 Aug

Approx wing length 8 mm

Woodland edges

Dasysyrphus tricinctus

A rather distinctive hoverfly

Recent Cornish records
21 April - 30 Sept

Approx wing length 9 mm

Small numbers in woodland
valleys

Dasysyrphus venustus

Care needed to identify

Recent Cornish records
29 April - 11 June

Approx wing length 8 mm

Woodland margins



Photo Leon Truscott

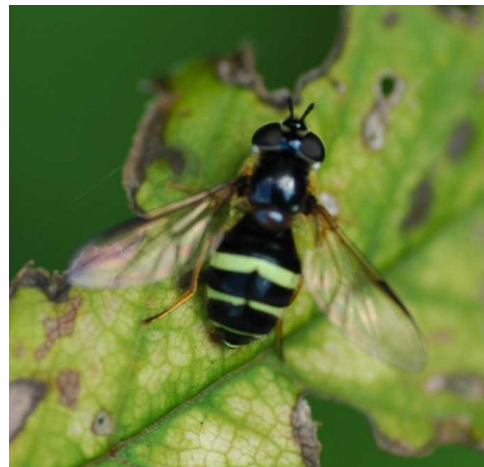


Photo Leon Truscott



Photo Leon Truscott

Platycheirus scutatus

This specimen probably
darkened with age

Recent Cornish records
25 April - 29 Sept

Approx wing length 6.5 mm

Widespread but under-recorded

Chrysotoxum cautum

Very wide abdomen aids
identification

Recent Cornish records
11 May - 26 July

Approx wing length 11.5 mm

Prefers grassy woodland areas

Chrysotoxum elegans

Not easy to separate from
other *Chrysotoxum*

Recent Cornish records
7 June - 8 Oct

Approx wing length 11mm

Scarce, but could turn up
anywhere



Photo Leon Truscott



Photo Leon Truscott

Xanthandrus comtus

Markings on abdomen are quite distinctive

Recent Cornish records
8 June - 25 Nov

Approx wing length 10 mm

May parasitize small moth 'pillars'

Xylota segnis

The orange-red belt is hidden by wings.

Recent Cornish records
20 April - 16 Sept

Approx wing length 10 mm

Breeds in very wet rotting sawdust or vegetation

Xylota sylvarum

Males far bigger than females

Recent Cornish records
7 May - 5 Sept

Approx wing length 10 mm

Breeds in rotting Beech sawdust



Photo Leon Truscott



Photo Leon Truscott



Photo Leon Truscott

Melangyna umbellatarum

The three species on this page
are difficult to identify

Recent Cornish records
2 May - 13 Sept

Approx wing length 7.5 mm

Scarce, found in wooded areas

Melangyna lasiophthalma

An early Spring species

Recent Cornish records
30 March - 10 April

Approx wing length 8.5 mm

Frequents Sallow blossom

Episyrphus balteatus

Very common, easy to recognise
variable in size

Recent Cornish records
13 March - 25 Dec

Approx wing length 8 mm

Common name,
Marmalade Hoverfly



Photo Leon Truscott



Photo Leon Truscott



Rhingia campestris

Snout and reddish abdomen
is diagnostic

Recent Cornish records
8 April - 25 Nov

Approx wing length 8 mm

Very common, breeds in dung

Rhingia rostrata

A locally very scarce hoverfly

Recent Cornish records
15 Aug - 12 Sept

Approx wing length 8.5 mm

May also have a Spring brood

Brachypalpoides lenta

Black legs and blood-red abdomen
make it unmistakable

Recent Cornish records
4 May - 17 July

Approx wing length 11 mm

Associated with Beech trees



Photo Leon Truscott



Photo Leon Truscott

Eristalis arbustorum

Very common on flowers.

Recent Cornish records
29 May - 11 Oct

Approx wing length 8.5 mm

Pale face aids ID

*Eristalis intricarius*

A bee mimic, different
colour forms

Recent Cornish records
14 April - 8 Oct

Approx wing length 10 mm

Scutellum always yellow

*Eristalis pertinax*

Common and very similar to
Eristalis tenax Front tarsi orange

Recent Cornish records
2 May - 1 Oct

Approx wing length 10 mm

As the two above, breeds in
drains and ditches



Cheilosia albitarsus

Black antennae,
Tarsus orangey, not white

Recent Cornish records
4 May - 6 Sept

Approx wing length 8 mm

Often seen on Buttercups



Cheilosia albipila

Orange antennae and legs

Recent Cornish records
13 March - 2 Sept

Approx wing length 9.5 mm

Larval food plant Marsh Thistle



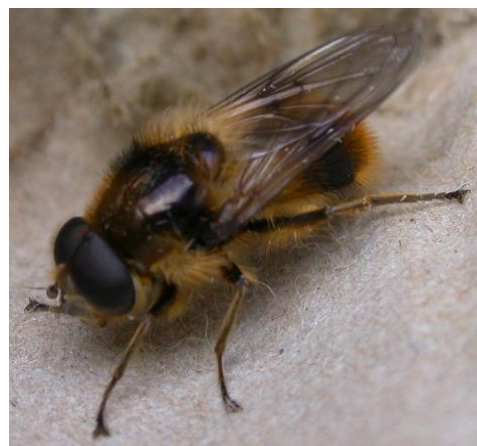
Cheilosia illustrata

Dark wing patch, above dark
area of the abdomen

Recent Cornish records
23 April - 27 Aug

Approx wing length 9 mm

Commonly seen on
Umbellifers



Cheilosia pagana

Orange antennae, large variation
in size and markings

Recent Cornish records
28 March - 8 Oct

Approx wing length 6 mm

*Cheilosia variabilis*

Face is hairy, shown in cop,
female facing, male at top.
As name suggests, very
variable

Recent Cornish records
7 May - 19 July

Approx wing length 9 mm

Prefers woodland edges

*Cheilosia vernalis*

Dark hairs on eyes and
quite a small species.

Recent Cornish records
3 Mar - 10 Sept

Approx wing length 6 mm

Associated with Yarrow
and rather dry areas.



Platycheirus albimanus

Female shown, male longer and thinner, grey spots on abdomen, only appear grey at certain angles

Recent Cornish records
1 March - 24 Dec

Approx wing length 6.5 mm

Often seen on Spring flowers
but has three broods

Platycheirus manicatus

Thorax dull rather than shiney
Male shown

Recent Cornish records
30 April - 20 Sept

Approx wing length 8 mm

Prefers dry grassland if
the soil is not too acid.

Platycheirus peltatus

Largest of the *Platycheirus*
Not easy to ID in the field

Recent Cornish records
10 May - 7 Aug

Approx wing length 8 mm

Can be found in most
habitats



Meliscaeva cinctella

Female shown, male quite similar
in size and markings

Recent Cornish records
5 Mat - 27 Aug

Approx wing length 8.5 mm

Difficult to ID in field

Meliscaeva auricollis

Male shown, female has brighter
markings

Recent Cornish records
26 Jan - 26 Dec

Approx wing length 8 mm

Probably hibernates as adult
in coldest months

Eupeodes corollae

Female shown, male narrower
and markings join in centre

Recent Cornish records
24 Feb - 6 Nov

Approx wing length 7 mm

Very common in any habitat



Photo Leon Truscott



Melanostoma scalare

Very common on Lesser Celandines
several generations

Recent Cornish records
26 Jan - 17 Dec

Approx wing length 6.5 mm

Markings usually obscured by wings.

Melanostoma mellinum

A small hoverfly found in
grassy places.

Recent Cornish records
22 Apr - 26 Oct

Approx wing length 6 mm

Easily missed being low down in
the grasses

Sphaerophora scripta

Female shown, unmistakable and
widespread, male long and thin

Recent Cornish records
25 April - 7 Nov

Approx wing length 6 mm

Very common in grassy areas
Sometimes migrates



Photo Leon Truscott



Volucella pellucens

The clear white band makes this almost unmistakable

Recent Cornish records
25 May - 23 Sept

Approx wing length 13 mm

Often on Bramble flowers

Volucella bombylans
Var. plumosa

A bumblebee mimic
fairly common

Recent Cornish records
23 May - 30 Aug

Approx wing length 12 mm

Larvae scavenge in bumblebee nests

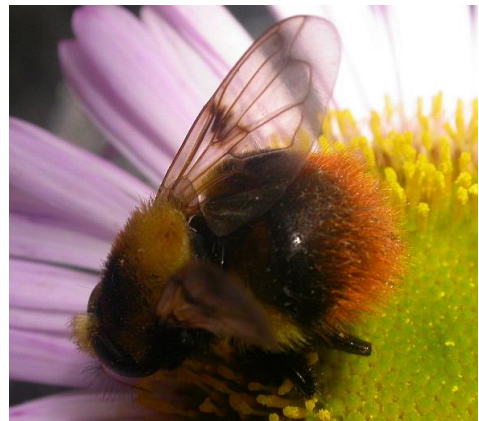
Volucella bombylans
var. haemorrhoidale

Very unusual colour form of this
bumblebee mimic

Recent Cornish records
Have only seen it twice

Approx wing length 12 mm

Most likely to be seen in June



Sericomyia silentis

Found near boggy ground

Recent Cornish records
21 May - 11 Oct

Approx wing length 12 mm

Often seen basking on flowers

Sericomyia lappona

A rather scarce hoverfly

Recent Cornish records
24 April - 8 July

Approx wing length 10.5 mm

Prefers high acid bogs

Volucella zonaria

Largest British hoverfly

Recent Cornish records
22 April - 4 Oct

Approx wing length 17 mm

Breeds in Wasp nests

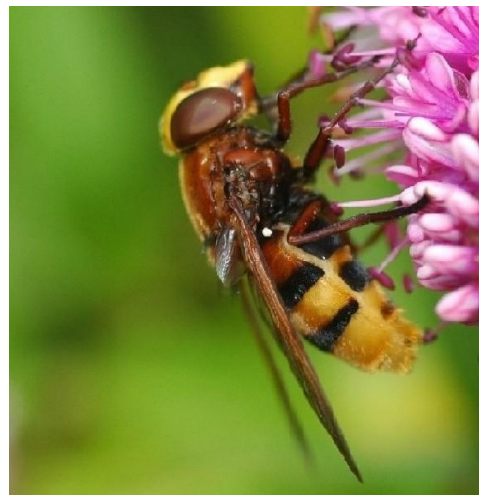


Photo Leon Truscott

Chrysotoxum bicinctum

Dark wings and only two yellow bands make it distinctive

Recent Cornish records
23 May - 7 Sept

Approx wing length 9 mm

Usually seen in sunny places
sheltered by trees

Epistrophe eligans

Exceptional yellow version of
female, often no yellow visible

Recent Cornish records
17 April - 7 Aug

Approx wing length 8 mm

Often on Hawthorn blossom

Leucozona glaucia

A rather local species

Recent Cornish records
8 July - 20 Sept

Approx wing length 10 mm

May be seen on Hogweed
flowers



Photo Leon Truscott



Eumerus strigatus

Difficult to ID in the field, hind femur swollen

Recent Cornish records
14 May - 22 Aug

Approx wing length 5 mm

Larvae in tubers and rhizomes

Platycheirus granditarsa

Distinctive orange red abdomen
often covered by wings.

Recent Cornish records
7 May - 1 Oct

Approx wing length 7 mm

Frequents damp meadows

Syrirta pipiens

Swollen hind leg is
good to help ID

Recent Cornish records
30 May - 8 Oct

Approx wing length 5.5 mm

Common on Bramble blossom



Epistrophe diaphana

Similar to species below but
has wider yellow bands

Recent Cornish records
8 June - 15 Sept

Approx wing length 8.5 mm

Very scarce found near woodland

Epistrophe grossulariae

Parallel black and yellow bands
quite distinctive

Recent Cornish records
9 June - 19 Sept

Approx wing length 10.5 mm

Often seen on umbellifer flowers

Epistrophe nitidicollis

Orange antennae help distinguish
it from above species

Recent Cornish records
11 May - 20 June

Approx wing length 10 mm

Uncommon, photographed
egg-laying in garden



Photo Leon Truscott



Photo Leon Truscott



Photo Leon Truscott

Dasysyrphus pinastri

Difficult to identify in
the field

Recent Cornish records
16 May - 8 July

Approx wing length 7.5 mm

Prefers coniferous woodland

Xanthogramma citrofasciatum

Bright orange/yellow legs are
noticeable

Recent Cornish records
4 May - 2 July

Approx wing length 8 mm

Prefers dry grassland, scarce.

Xanthogramma pedissequum

Two yellow triangular spots
help with identification

Recent Cornish records
13 May - 15 Sept

Approx wing length 8 mm

Rare, may be seen basking on
bare grassy areas



Photo Leon Truscott



Photo Leon Truscott



Photo Leon Truscott

Eupeodes latifasciatus

Care needed with ID

Recent Cornish records
5 May - 22 Sept

Approx wing length 7.5 mm

Found in open areas of rushes

Eupeodes luniger

Largest of the *Eupeodes*

Recent Cornish records
13 Feb - 21 Dec

Approx wing length 8 mm

Found in many habitats

Scaeva selenitica

A rather scarce migrant

Recent Cornish records
11 June - 30 July

Approx wing length 11 mm

May be associated with
Spruce trees



Photo Leon Truscott



Photo Leon Truscott



Photo Leon Truscott

Ferdinandea cuprea

Found in old woodland

Recent Cornish records
28 April - 14 Oct

Approx wing length 9 mm

Associated with weeping wounds
on tree trunks

Eristalinus aeneus

Top part of eyes are hairy

Recent Cornish records
5 April - 19 Sept

Approx wing length 8 mm

Often seen very near the coast

Pipiza noctiluca

Abdominal markings of
female shown

Recent Cornish records
26 April - 19 Aug

Approx wing length 7 mm

Sometimes sunbathes on leaves



Photo Leon Truscott



Photo Leon Truscott



Photo Leon Truscott

Scaeva pyrastris

White markings and size make
this quite striking

Recent Cornish records
14 June - 24 Oct

Approx wing length 10 mm

Can fly a long distance

Portevinia maculata

Only large hoverfly with
grey spots

Recent Cornish records
4 April - 27 May

Approx wing length 7.5 mm

Associated with Ramsons in
old woodlands

Myathropa florea

Very variable in size and markings

Recent Cornish records
9 May - 1 Nov

Approx wing length 10 mm

Breeds in pools of rotting leaves



Photo Leon Truscott



Photo Leon Truscott

Merodon equestris

Legs always black but body colour varies

Recent Cornish records
27 April - 17 July

Approx wing length 9.5 mm

The Narcissus fly, a bulb field pest.

Arctophila superbiens

A rather striking and scarce hoverfly

Recent Cornish records
20 July - 20 Sept

Approx wing length 12 mm

Prefers flowers of Devil's-bit
Scabious

Criorhina berberina

Another Bumblebee mimic

Recent Cornish records
2 May - 23 July

Approx wing length 10 mm

Breeds in dead wood



Photo Leon Truscott



Photo Leon Truscott

Anasimyia contracta

Found near boggy ground

Recent Cornish records
10 June - 9 Aug

Approx wing length 6 mm

Associated with Typha

Anasimyia lineata

Has a long snout when viewed
from the side

Recent Cornish records
1 June - 9 Aug

Approx wing length 7 mm

Not often seen on flowers

Helophilus pendulus

Commonest hoverfly with
striped thorax

Recent Cornish records
4 April - 12 Nov

Approx wing length 10 mm

Breeds in drains and ditches



Photo Leon Truscott



Photo Leon Truscott



Neoascia podagrica

Commonest of the three
on this page

Recent Cornish records
8 April – 8 Oct

Approx wing length 4 mm

Small and low flying, so
under-recorded

Sphegina clunipes

Small and easily missed

Recent Cornish records
8 April - 10 Sept

Approx wing length 6 mm

Prefers being in the shade

Neoascia meticulosa

Only recorded from one area
in Cornwall near reed beds

Recent Cornish records
Not enough data

Approx wing length 4 - 5 mm

Careful examination of legs needed to
separate from other *Neoascia* species



Helophilus trivittatus

Yellow face, abdomen longer than
H pendulus and often paler

Recent Cornish records
2 June - 25 Sept

Approx wing length 11 mm

Frequent migrant

Chrysogaster virescens

Females can have a slightly
greenish tint

Recent Cornish records
29 May - 25 July

Approx wing length 6 mm

Prefers acid bogs

Microdon myrmicae/mutabilis

Associated with several
species of ants

Recent Cornish records
6 June – 24 July

Approx wing length 8 mm

Seen around tall grass
tussocks in boggy areas.



Cheilosia fraterna

Uncommon, thought to breed in
Marsh thistles

Recent Cornish records
13 March – 7 Sept

Approx wing length 8 mm

Prefers upland marshy areas
and rests on Buttercups

Melanogaster hirtella

Many similar species,
difficult to ID

Recent Cornish records
15 April – 12 Aug

Approx wing length 5.5 mm

Prefers damp meadows, sometimes
seen on Buttercups

Eristalis tenax

Often mistaken as a
Honeybee on flowers

Recent Cornish records
All year

Approx wing length 11 mm

Can be seen anywhere, breeds
in dung etc.



Neoscia tenur

Flies low over damp
grassy areas

Recent Cornish records
28 March - 8 Oct

Approx wing length 4 mm

Easily missed because of size

Cheilosia impressa

Yellow wing bases aid
Identification.

Recent Cornish records
23 May – 14 Sept

Approx wing length 7 mm

Often seen on Umbellifers

Cheilosia bergenstammi

Big, black with golden hairs
and orange antenna

Recent Cornish records
23 March – 3 Oct

Approx wing length 8 mm

Often seen around
Ragwort



Bacca elongata

Easy to miss, small thin
and very long

Recent Cornish records
23 April - 9 Oct

Approx wing length 6 mm

Flies low amongst vegetation

Syrphus ribesii

Several very similar species
Difficult to ID

Recent Cornish records
4 Apr – 19 Oct

Approx wing length 10 mm

Yellow hind leg is clue to ID

Leucozona lucorum

Volucella pellucens is very similar
and more commonly seen

Recent Cornish records
17 Apr – 19 Aug

Approx wing length 9 mm

More likely in dappled shade in low
Spring-time vegetation



Platycheirus rosarum. N.J.

Difficult to ID in the field, when wings cover markings

Recent Cornish records
5 June - 4 Sept

Approx wing length 6.5 mm

Often found in wet meadows near
near to water



Pipizella viduata. N.J.

Any small, glossy black fly on tiny low down flowers, may be this.

Recent Cornish records
23 April - 31 Aug

Approx wing length 5 mm

Low down in grassy meadows



Chrysogaster solstitialis. N.J.

The large red eyes are a good help to the ID

Recent Cornish records
31 May - 18 Sept

Approx wing length 6.75 mm

Often seen on the flowers of many of the umbellifer family



Eumerus funeralis. N.J.

Difficult to ID in the field, hind femur swollen

Recent Cornish records
1 Feb - 24 Aug

Approx wing length 5 mm

Larvae in tubers and rhizomes



Nigel Jones

Platycheirus clypeatus. N.J.

Distinctive orange markings on abdomen often covered by wings.

Recent Cornish records
4 May – 2 Nov

Approx wing length 6.5 mm

Frequents damp meadows on
sedge and grass flowers



XXXXX

ID

Recent Cornish records

Approx wing length XX mm

Common

Eriothrix rufomaculata

Fairly common in July & Aug

Recent Cornish records
7 May - 8 Sept

Approx wing length 6 mm

Probable Lepidopteran hosts

*Alophora hemiptera*

Very wide body, unmistakable

Recent Cornish records
23 May - 29 Aug

Extremely variable in size

Hosts mainly Hemipteran bugs

*Thelaira nigripes*

Could be mistaken for
Mesembrina meridiana

Recent Cornish records
16 July - 4 Aug

Approx wing length
8 mm

Host, large moths eg.
Garden Tiger



Dexiosoma caninum

Prefers flying low in
vegetation

Recent Cornish records
24 June – 12 Aug

Approx wing length 7 mm

Various beetles are thought to
be the hosts

Cylindromyia brassicaria

Rare late Summer species on
Southern coasts

Recent Cornish records
2 July - 27 Oct

Approx wing length 8 mm

Hairy shield bug is the host

Tachina ursina

Rare early Spring species
Woodland edges

Recent Cornish records
14 April 2018

Approx wing length 9 mm

Breeding and host
Unknown.



Voria ruralis

Fairly common but difficult to identify

Recent Cornish records
2 June – 18 Oct

Approx wing length ? mm

Uses many lepidopteran hosts,
Silver Y, Red Admiral etc.

Tachina grossa

Very large and fast flying,
In open areas like cliff-tops.

Recent Cornish records
12 June – 5 Oct

Approx wing length 10 mm
Extremely variable in size

Hosts are large lepidoptera such
Oak Eggar moth etc..

Pelatachina tibialis

Hosts are Small tortoiseshell,
Peacock and similar species.

Recent Cornish records
May - June

Approx wing length ?? mm

Thought to lay eggs directly
on the larva.



Photo L Oakes



Carcelia lucorum

Small but fairly distinctive
in appearance??

Recent Cornish records
9 June - 9 July??

Approx wing length 7 mm

Lepidopteran hosts such
as Garden tiger moth

Meigenia mutabilis

A common species but difficult
to ID

Recent Cornish records
27 Apr - 14 Aug

Approx wing length 8.00 mm
Very variable

Several species of beetles
act as hosts

Siphona geniculata

Fairly common in wet
marshy areas

Recent Cornish records
29 May - 30 Sept

Approx wing length 7.5 mm

Lays eggs in Crane-fly larvae



Phryxe nemea. N.J.

Usually a hint of red on
the abdomen

Recent Cornish records
28 May – 23 Oct

Approx wing length 6 mm

Uses many Lepidopteran hosts
mainly moths



Beris morrisii

Dark stigma on wings help
with ID

Recent Cornish records
27 June - 26 Aug

Approx wing length 6 mm

Larvae have been found in
roots of *angelica*

*Chloromyia formosa*

A common Soldierfly on
Hogweed flowers

Recent Cornish records
7 May - 11 Aug

Approx wing length 6.5 mm

Male has red abdomen
Female bluish (shown)

*Microchrysa flavicornis*

Very small Soldierfly

Recent Cornish records
15 June - 30 July

Approx wing length
4 mm

Breeds in damp rotting
vegetation



Nemotelus notatus

Small but fairly distinctive
in appearance

Recent Cornish records
9 June - 9 July

Approx wing length 5 mm

Only found on coastal salt marshes

*Sargus bipunctatus*

Common late Summer species

Recent Cornish records
17 July - 25 Sept

Approx wing length 10 mm

Male has longer bronze abdomen

*Beris vallata*

Common in wet
marshy areas

Recent Cornish records
12 June - 17 Sept

Approx wing length 5 mm

Breeds in wet rotting vegetation



Chorisops nagatomii

Only recently separated from
C.tibialis as a species

Recent Cornish records
July. Few sightings

Approx wing length 5 mm

Males sometimes swarm under
trees in afternoons

Oxycera rara

Small, but the biggest of the
yellow marked Soldierflies

Recent Cornish records
Few records

Approx wing length 6 mm

Prefers sunny damp mossy
seepages near coast.

C

D

Recent Cornish records
? - ?

Approx wing length ? mm

A



P Saunders

Bombylius discolor

A scarce bee mimic

Recent Cornish records
6 April - 21 May

Approx wing length 11 mm

Throws eggs into Mining bees nest
whilst hovering (As both sp. below)

Bombylius canescans

Scarce and coastal species

Recent Cornish records
21 May - 19 July

Approx wing length 7 mm

Mining bees used as host

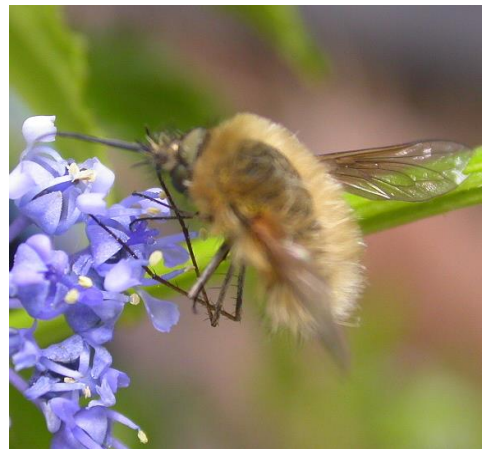
Bombylius major

Reasonably common in
open woodland areas

Recent Cornish records
29 Mar - 25 May

Approx wing length 12 mm

Females tend to be paler
in colour



Villa modesta

Associated with bee
Osmia aurulenta

Recent Cornish records
30 June - 8 Sept

Approx wing length 12 mm

Restricted to warm coastal
sandy areas

Vacant

?

Recent Cornish records
-

Approx wing length mm

?

Vacant

?

Recent Cornish records
-

Approx wing length ? mm

?



Machimus atricapillus

Many similar species known
as Robberflies

Recent Cornish records
17 July - 23 Aug

Approx wing length 10 mm

Thought to prey on Yellow Dungflies



Machimus rusticus

Mainly black legs aids ID

Recent Cornish records
This specimen taken at
Rushy Green 2 July

Approx wing length 11 mm

Eggs laid in short coastal dead
flower heads



Dysmachus trigonus

Prefers bare coastal ground

Recent Cornish records
21 May - 25 July

Approx wing length 10 mm

Tackles other powerful
insects as prey



Dioctria baumhaueri

Rests on broad leaved shrubs and tallish vegetation

Recent Cornish records
2 June - 6 Aug

Approx wing length 7 mm

Catches many insects incl
Ichneumonoids in flight

Asilus crabroniformis

An impressively large,
but now scarce Robberfly

Recent Cornish records
22 June – 27 Sept

Approx wing length 17 mm

Breeds in cowpats

Neoitamus cyanurus

Male shown has blue/grey
Tip to abdomen

Recent Cornish records
12 June – 10 September

Approx wing length 11 mm

Prefers old woodlands



Thereva nobilitata

Female has pale coloured club
on the halteres

Recent Cornish records
25 May – 6 Aug

Approx wing length 9 mm

A very commonly seen
Stiletto fly

*Acrosathe annulata*

The blue grey appearance is
almost unmistakable

Recent Cornish records
7 May – 16 July

Approx wing length 7 mm

Is only found on warm
coastal sand-dunes

*Machimus cingulatus*

Many very similar
Difficult to ID

Recent Cornish records
2 June – 21 Sept.

Approx wing length 7.5 mm

Can be seen on coastal
dry heathlands



Leptogaster cylindrica. N.J.

May be found fairly low
down in grassy meadows

Recent Cornish records
29 June - 8 Aug

Approx wing length 6.0 mm

Thought to prey mostly on small flies
or other small flying insects

Rhagio tringarius

Markings vary, but always clear
wings, no stigma

Recent Cornish records
11 May - 6 Sept

Approx wing length 9 mm

Commonly found in marshy
meadows



Physocephala rufipes

Waits on flowers for passing insects

Recent Cornish records
7 May - 3 Sept

Approx wing length 10 mm

Probably various bees used
as host

*Myopa testacea*

Seems restricted to Mid Cornwall

Recent Cornish records
27 April - 14 June

Approx wing length 5.5 mm

Common wasp thought to be used
as host

*Sicus ferrugineus*

Seen more frequently than the
previous two Conopids

Recent Cornish records
10 June - 12 Aug

Approx wing length 6 mm

Bumble bees are thought to be
the host



Thecophora atra

Small, dark and easily missed
in the field

Recent Cornish records
2 July – 11 Sept

Approx wing length 5 mm

Attacks the small species
of *Lasioglossum* bees

Vacant

Common late Summer species

Recent Cornish records
17 July - 25 Sept

Approx wing length 10 mm

Male has longer bronze abdomen

Vacant

Common in wet
marshy areas

Recent Cornish records
12 June - 17 Sept

Approx wing length 5 mm

Breeds in wet rotting vegetation



Bibio leucopterus

Female as shown here but male
wings appear whitish

Recent Cornish records
20 April to 2 June

Approx wing length 7 mm

Breeds in soil and prefers
Grassy areas

*Bibio pomonae*

The large size and red legs make
this species easy to spot

Recent Cornish records
10 May – 3 Aug

Approx wing length 10 mm

Associated with areas of heather

*Bibio johannis*

Both sexes have fairly
clear wings

Recent Cornish records
5 April – 1 May

Approx wing length 5.5 mm

Black with some red on legs
rather small



Bibio marci

Large, hairy, dangle hind legs
often in swarms

Recent Cornish records
31 Mar – 2 June

Approx wing length 10mm

Often seen above Alexanders
and other roadside plants

Dilophus febrilis

Fever fly, like small Bibio
in swarms

Recent Cornish records
29 Mar – 23 Sept

Approx wing length 5 mm

Very common in the county-side
in summer



Tipula maxima

Biggest British fly

Recent Cornish records
13 Mar – 1 Oct

Approx wing length 26 mm

Often seen near wet woodland

*Tipula lunata*

A rather scarce

Recent Cornish records
4 May – 8 June

Approx wing length 18 mm

Prefers sheltered areas
Of vegetation

*Eloeophila trimaculata*

Only one record

Recent Cornish record
25 May

Approx wing length 17 mm

Found in very wet boggy
area



Ptychoptera contaminata

Common in wet
marshy areas

Recent Cornish records
11 Mar - 30 Aug

Approx wing length 9 mm

Breeds in water



Poecilobothrus nobilitatus

Male shown below female, seen in swarms low over water.

Recent Cornish records
12 June - 6 Nov

Approx wing length 6 mm

Male has smoky wings with white tips

Dolichopus unguulatus

A very common fly on flowers in early Summer

Recent Cornish records
15 May - 8 Aug

Approx wing length 6 mm

Very similar to above species, but male, shown, has clear wings

Nigel Jones also recorded the twelve other Dolichopids listed opposite on 28 June 2021 at Rospannel Farm.

I currently have no images or enough information on these species to make individual entries for them but assume that they are mostly less colourful species and difficult to identify

These were all verified by

C.M. Drake

Many thanks to

Nigel and Martin for letting me use their records here



The other Dolichopids were

Campsicnemus loripes
Campsicnemus pumilio
Chrysotus blepharosceles
Chrysotus cilipes
Chrysotus gramineus
Chrysotus neglectus
Dolichopus brevipennis
Dolichopus simplex
Gymnopternus aerosus
Medetera saxatilis
Medetera truncorum
Sympycnus pulicarius

Empis tessellata

Biggest British Empid, three dark stripes on thorax, obvious orange base to wings

Recent Cornish records
26 Apr – 18 July

Approx wing length 7.00 mm

Common in most habitats

Empis livida. N.J.

Rather common, females often dance 3 ft. above the ground.

Recent Cornish records
26 Apr – 16 July

Approx wing length 6.00 mm

Empis aestiva. N.J.

A small dark species

Recent Cornish records
29 May – 22 July

Approx wing length 2.00 mm?

Hilara brevistyla. N.J.

Another small species

Only two recent Cornish records
31 May – 28 June

Approx wing length 2.0 mm



No image currently available for last two species.

Sarcophaga carnia

These three similarly large species
are found almost anywhere

Recent Cornish records
16 April – 14 Oct.

Approx wing length 11 mm

Does not lay eggs, gives birth
to live young on carrion, worms,
slugs etc. Fond of ripe blackberries.

S. variegata. N. J.

Recent Cornish records
28 June – 7 Sept

S. subvicina. N.J.

Recent Cornish records
26 June – 7 Sept

S. incisilobata. N.J.

Recent Cornish records
25 June – 4 Sept

S. crassimargo. N.J.

Recent Cornish records
28 June – 15 Sept

Nyctia halterata. N.J.

Recent Cornish records
28 June – 4 Sept



Image unavailable

I have currently have little definite info. or
verified images available for the last four
generally smaller species as they are poorly
recorded with few records

Anthomyia procellaris

Very distinctive black and grey pattern on thorax

Recent Cornish records
Few but in August.

Approx wing length 6mm
Very, variable in size.

Usually in hedgerows and seen
sometimes on bird droppings.

*Hylemya vagans* N.J.

Markings not quite as obvious as
spp above, only males can be ID'd

Recent Cornish records
24 Apr – 2 Nov

Approx wing length 6 mm

Some red/yellow on middle
femur

*Pegomya bicolor*

This image of adult taken on
19 Oct

Recent Cornish records
are mostly of the mines

Approx wing length 4.0 mm

Thought to mine the leaves
of Sorrel and Docks



Ilythea spilota. N.J.

Found close to water.

Recent Cornish records
27 June - 20 Nov

Platypalpus pallidiventris .N.J.

Runs around on leaves

Recent Cornish records
30 May – 30 Sept

Platypalpus minutus. N.J.

One of the Dance-flies

Recent Cornish records
18 May – 6 Sept

Rivellia syngenesiae. N.J.

Has long thin antennae

Recent Cornish records
31 May – 2 Aug

Neria cibaria. N.J.

Found near water margins

Recent Cornish records
17 May – 27 June

Terellia serratulae. N.J.

Eggs injected in living plant stems

Recent Cornish records
28 June – 18 Aug

I currently don't have any images
or confirmed info on the
six species listed here
from Rospanel Farm

Haematopota pluvialis

Common "Cleg" female bites man,
needs blood before breeding

Recent Cornish records
1 July - 2 Aug

Approx wing length 10 mm

Approaches silently and settles to bite

*Coenosia tigrina*

Seen bringing down a "Cleg" and
sucking out the contents (Photo)

Recent Cornish records
2 June - 19 Sept

Approx wing length 3 - 5 mm

Cleg was immobilized as soon as the
C. tigrina bit it in flight in neck

*Tabana autumnalis*

Black stripe on underside of abdomen

Recent Cornish records
22 June - 18 Sept

Approx wing length 15 mm

Eggs laid near water



Dryomyza anilis

Many similar, cloudy wing veins
important aid to ID

Recent Cornish records
14 June - 20 Nov

Approx wing length 5 mm

Eggs laid in rotting vegetation

*Sepedon sphegea*

Unusually shaped antennae and red
legs are diagnostic

Recent Cornish records
3 July - 20 Sept

Approx wing length 6 mm

Parasitic on molluscs

*Sciara hemerobioides*

Male is all black, female bright
yellow below, shown

Recent Cornish records
4 July - 4 Sept

Approx wing length 6 mm

Seen on umbellifer flowers,
breeds in fungi under the soil



Chrysopilus cristatus

Covered in yellow hairs when newly emerged

Recent Cornish records
29 May - 3 Aug

Approx wing length 7 mm

Breeds in rotting wood.

Opomyza germinationis

Tends to walk a lot

Recent Cornish records
29 June - 3 Aug

Approx wing length 3 mm

Larvae develop in grass stems

Tephrochlamys rufiventris

Despite obvious colouring
care needed with ID

Recent Cornish records
Not enough data

Approx wing length 5 mm

Associated with fungal rotting
of plant and animal matter



Scathophaga stercoraria

Male shown, female less hairy
green/brown in appearance

Recent Cornish records
Can be seen throughout the year

Approx wing length 6 mm

Usually found on cow pats, in large
numbers in Summer

Mesembrina meridiana

Basks in sun on tree trunks
around fields with cattle in.

Recent Cornish records
9 Apr – 8 Nov

Approx wing length 7.0 mm

A single very long egg is laid
in fresh cow-pat.

Haematopota crassicornus

Found in upland areas in wet
of open grassland

Recent Cornish records
14 June - 17 July

Approx wing length 8 mm

White spots on wings quite
noticeable in the field



Photo taken by Yvonne Barlow



Sepsis duplica

Very similar to species below

Recent Cornish records
June - July

Approx wing length 2.5mm

Probably under recorded

*Sepsis fulgens*

A very common but small
species

Recent Cornish records
20 Feb – 30 Oct

Approx wing length 2.5mm

Breeds in rotting vegetation

*Argyra diaphana*

Common in damp
woodlands

Recent Cornish records
5 May – 30 July

Approx wing length 4.5 mm

Probably breeds in damp soil
Appears to be “brilliant white” when
in flight, but “disappears” on landing.



Chrysops caecutiens

The Splayed deerfly, a very striking fly

Recent Cornish records
2 July - 27 Aug

Approx wing length 8 mm

Breeds in water margins

Lonchaea iona/patens?

Females as this is, impossible to ID
with certainty

Recent Cornish records
This one on 23 May

Approx wing length 4 mm

Probably breeds under bark of very
rotten bark on Ash wood

Pegomya bicolor

One of the Anthomyiidae group

Recent Cornish records
are mostly of the mines this
adult on 19 Oct

Approx wing length 7.5 mm

Mines leaves of
Sorrel and Docks



Herina nigrina

Wing markings can be used
to aid ID

Recent Cornish records
Few records, mainly July

Approx wing length 2.5 mm

Can be seen waving its wings on
Umbellifers or low in short grasses

Hybomitra bimaculata

A large Horsefly, with
rather hairy legs

Recent Cornish records
Peaks in June

Approx wing length 12 mm

Flies low down in damp
wetland areas



Image V Valli

